



It's All About the water

2023 GLA Annual Report

Our mission is to preserve and protect the water quality, natural resources and quality of life in the Glen Lake/Crystal River Watershed through leadership, education and collaboration.

The Glen Lake Association, Inc., is a 501(c)(3) non-profit organization.

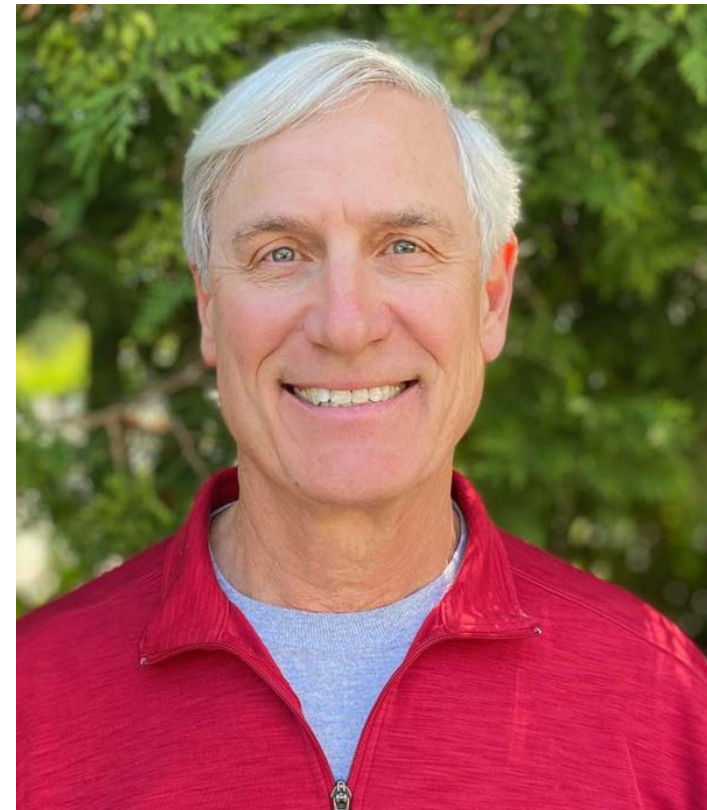


From Our President, Stan Kryder

Dear GLA Members and Friends,

Since my parents discovered Glen Lake back in the 1950s, it has been my favorite place to return to each year, and I am committed to doing everything I can to preserve and protect it.

As such, I am proud to serve as President of the Glen Lake Association. **The incredible knowledge and**



passion of our staff and volunteers truly make this a remarkable organization. Their commitment to “Keep It Blue” involves a year-round effort in a wide range of committees, task forces, meetings, and scientific research. Each person brings a wealth of professional expertise to help GLA in a variety of ways.

First, GLA has a rich history of benefactors who came before us and organized this terrific association. They also had the wisdom to create the “Legends Program” for anyone who puts GLA into an estate plan. Once again, this past year we had several more families who made this decision to put GLA into their wills. My profound thanks to those families who elected to support our organization in this way.

To our boat wash volunteers, your work over the years will have a lasting impact. I want to thank Lori Lyman for her vision to undertake the boat wash capital campaign several years ago. Lori’s efforts led to a historic result for GLA. I also want to thank Kris Fishman and Tom Dutmers for their leadership, teamwork, and results. Together, these volunteers have ensured our pioneering boat wash operation on Little Glen will have a dedicated source of annual funding for future operations.

Additionally, over this past Labor Day weekend, our boat wash team discovered fragments of Eurasian watermilfoil (EWM) near the Little Glen boat launch. Your GLA Board responded quickly, creating an EWM task force led by board member Pete Haley. The task force has hired two firms specializing in lake management to survey and search for EWM. Our watershed biologist, Rob Karner, is analyzing their findings and will put together an eradication plan if needed. The GLA is dedicated to



the early detection of and rapid response to the threat posed by invasive species in our watershed.

Our membership chair, Woody McCally, has successfully ushered in our new annual calendar dues process, and I want to thank him for this effort. And thanks to the leadership of Kris Fishman, we expanded membership by hosting neighborhood gatherings around the lake. These events were very well received by both existing and prospective members, and we look forward to holding more events this coming summer.

New board member Pat Combs has jumped right in, getting up to speed on issues related to the growing popularity of wake boats. We recognize that this is a subject we will need to continue to study. It’s a big lake, and we must all learn to share it wisely with each other.

As our watershed continues to see substantial growth in the number of residents and visitors, as well as the number and type of watercraft, we will all need to work



harder to protect our little slice of paradise. It won’t be easy, but I look forward to the challenge of preserving this special place for future generations.

As you read the remainder of this Annual Report, **I hope you are encouraged and proud of the good work that’s being done to monitor and test water quality, prevent invasive species, research and apply new technologies, and educate the Glen Lake community through homesite consultations, discovery boat tours, and more.** Thank you again for your support and partnership with the GLA as we work together to “Keep It Blue!”

Stan Kryder, President

A handwritten signature in black ink that reads "Stan Kryder". The signature is written in a cursive style.

Glen Lake Association



Boat Wash & Creel Report

Interested in working on Little Glen Lake? Come join our team at the boat wash! We talk with boaters about protecting Glen Lake from aquatic invasive species, wash boats, and collect fish reports from anglers. It's a fun outdoor seasonal job with a flexible schedule and the prettiest view. Internships are also available. Great for retirees and students.



We all share the water. Have fun and remember to maintain at least 500 ft distance from shore or structure and 20 ft of depth when wake boating!



Email for a job application:
boatwash@glenlakeassociation.org

2023 Boat Wash by the Numbers

4,272 Total Boats

993 Boats Power Washed

668 Fishing Boats

642 Motors Flushed

3,578 Pleasure Boats

1,283 Info Sheets Distributed

0 Refusing Inspection

4 Bait From Other Lakes

7 Mussels Found

63 Aquatic Plants Found

2023 Creel Survey by the Numbers

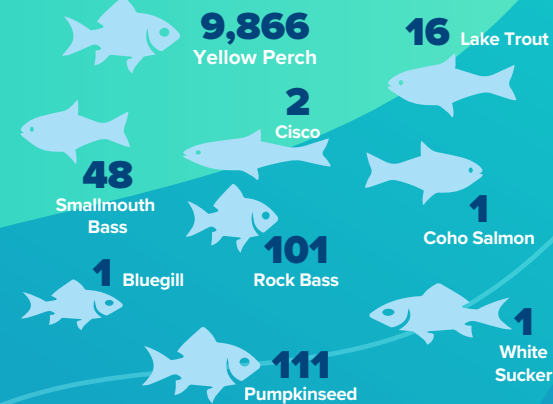


3,839 Hours Fished

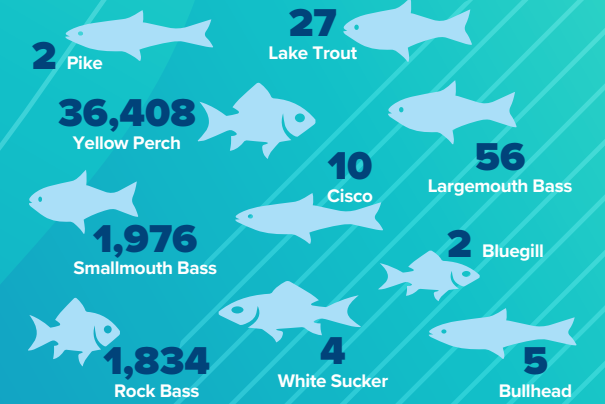
942 Fishing Sessions

1,897 Anglers

Harvested (what they kept)



Released (what they threw back)



Interesting and intelligent people are never in short supply when it comes to Glen Lake anglers, including multigenerational groups and long-time friends who have fished here for years. Few people are more passionate about protecting Glen Lake. While they are not apt to divulge their favorite place to drop a line, they will happily share their favorite recipe for perch dinner. Anglers are eager to participate in the Creel Survey, confident in the knowledge that the information they share will help ensure the health of the fishery they so cherish.

Do you want to learn more about the watershed, or the intersection of nature, technology, and science around us? Boat wash operation tours are available in the early spring and fall. And you won't want to miss our micro-fishing initiative this summer!

Contact us for more information at:
boatwash@glenlakeassociation.org



Glen Lake Water Level & Crystal River Flow



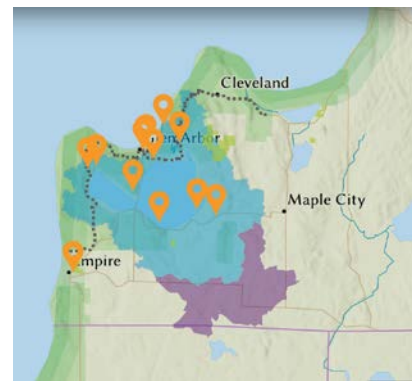
Since 1945, the Glen Lake Association has maintained and operated the Crystal River Dam. River flow is measured at this dam, located near the start of the Crystal River along Fisher Road. The GLA Water Level Committee “Captains” monitor the flow both electronically and manually, recording data on a continuous basis. These measurements are then used as the basis for adjusting the dam, raising or lowering two gates as necessary to influence lake level and river flow. All adjustments are made in accordance with a Water Sharing Management Plan (WSMP) which was established in 2005 by court order.



Over the past year, our captains visited the dam twice a week to take readings, inspect the dam, and make decisions on changing the dam gate height. The captains made a total of 14 gate changes to help manage the water elevation of Glen Lake, but nature is still ultimately in control; the dam has only a minor impact on lake levels relative to precipitation and summer evaporation. At its maximum flow setting, the dam can only lower the lake 0.03 feet (i.e. about 1/3 inch) per day, and that’s if there is no new inflow. Regardless of the dam gate settings, rainfall, groundwater flow and evaporation are the key factors determining lake level and river flow.

**Want to join our captain team?
Learn more at:
glenlakeassociation.org/water-levels**

The watershed surrounding Glen Lake also contributes to its water level. Nearly 5x the size of the lake, the Glen Lake/Crystal River Watershed captures rain and snowmelt which seep underground and flow towards the lake. This means that if we receive rainfall, not only does the lake immediately rise, but it continues to rise over the next week or so as water flows and seeps from the watershed to the lake.



**Did you know the GLA hosts
an interactive watershed map?
Learn more and explore here:
glenlakeassociation.org/watershed-map**

The Watershed Wire

Lake Superior State University and GLA Collegiate Collaboration



Glen Lake and Brooks Lake were selected as prime research locations for measuring algal concentrations and harmful algal toxins. Results from the water samples were used to help scientists around the globe develop and calibrate satellite imagery to measure and predict harmful algal blooms. Good news: neither summer nor fall water samples contained any algal toxins!

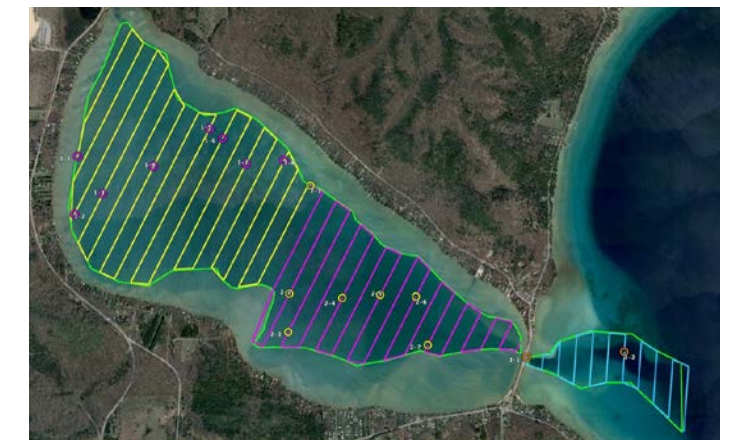


Michigan State University (MSU) and GLA Collegiate Collaboration

Some neighboring lakes are experiencing thick, slimy mats of golden-brown algae (GBA) on their otherwise sandy shoals. In summer 2023, MSU Professor Jan Stevenson, the leading GBA scientist in Michigan, added Big and Little Glen to his expanding research into the phenomenon. Preliminary results from samples taken from Glen Lake show no signs of unpleasant algae mats. Perhaps our lake can shed some clues on the cause of problems occurring on other lakes.



Eurasian Watermilfoil (EWM): GLA on High Alert!



Over the 2023 Labor Day weekend, a few strands of the highly invasive aquatic plant EWM were identified floating offshore of the Little Glen Boat Launch by GLA Boat Wash Coordinator Victoria Velting. The GLA took immediate action and contracted Dennis Wiand of Zero Gravity Aerial to record high resolution aerial drone video of Little Glen and the Narrows Channel into Big Glen. (Continue on page 7)

(Continued from page 6)

The video images were carefully analyzed by GLA Watershed Scientist Rob Karner, who identified and mapped GPS coordinates of suspected areas of EWM growth. In spring 2024, all areas of suspected EWM growth will be investigated and a plan for eradication implemented if needed. While our focus for now is Little Glen (the site of initial discovery of EWM fragments) survey plans for Big Glen, the Fisher Lakes and Crystal River have been prepared and will be implemented if necessary.



Terrestrial Invasives: GLA Winning the War Against Yellow Iris



For the past three years, the GLA has been surveying, marking, and removing invasive yellow iris from the shores of the Glen and Fisher Lakes. With the assistance of local invasive and native plant expert Laurel Voran, GLA staff, volunteers, and concerned riparian property owners, we have nearly eradicated Yellow Iris from our shorelines. No



chemical herbicides were used, only hand digging with a shovel and trowel. This three-year sustained effort shows that persistence can pay off.

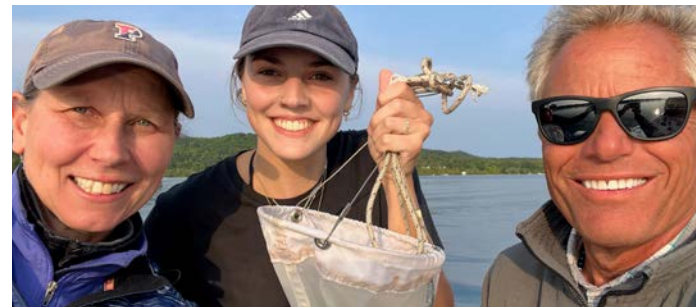
Brooks Lake: GLA Targets Invasive Curly-Leaf Pondweed

Invasive curly-leaf pondweed was discovered in Brooks Lake by Bill Meserve and Mike Litch, two of GLA's volunteers and Honorary Member Award winners. Bill and Mike regularly monitor aquatic plants as part of the GLA's participation in the Michigan Cooperative Lakes Monitoring Program.



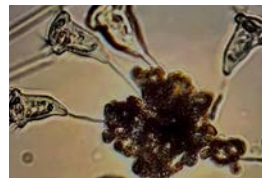
The GLA was quick to respond and enlisted GLA Assistant Watershed Scientist Joe Blondia and his son Jamie to remove the plants before they take over the lake. Ongoing monitoring and removal is planned for the upcoming season to keep this invader at bay.

Plankton Analysis: Monitoring the Microbes



Since 2004, the GLA has monitored the microscopic life of the lakes in our watershed. Using a plankton net, four sites are sampled once a month from April through November, on Big and Little Glen and Fisher Lake.

Results of the 2023 survey show a decline in the volume of plankton compared to previous years. Plankton are the basis of the food web for our lakes. No conclusions have been made as to the cause, but our results are being shared with the broader scientific community in search of answers.



Discovery Boat: The Fun of Learning on the Water

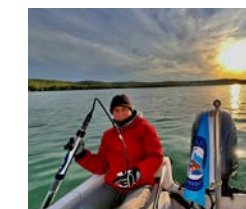


The 2023 Discovery Boat was a huge success, boasting eight sold-out regular cruises and one bonus cruise for a total of 75 participants. We also partnered with the Northwestern Michigan College Master Naturalist Program again by offering a special full day excursion. Students who participated earned credit toward their certification. Don't miss your chance to learn all about our fascinating watershed; sign up early for 2024!



Annual Inlet Study: Testing Our Surface Water

Every year for the past ten years, on or around the summer solstice, the 12 major inlets to the Glen and Fisher Lakes have been sampled for basic water quality parameters. Using the GLA hydrolab, pH, conductivity, water temperature, turbidity, and dissolved oxygen are measured. As in past years, this year's team of Karner, Wiesen, Denton, and intern Josh Samberg found no significant water quality issues.



Monitoring Water Quality: Hydrolab Analysis Year Round

Dating back to 2004, roughly 1,800 water quality measurements are taken every year. Parameters measured include pH, dissolved oxygen, turbidity, conductivity, and temperature. As detailed in our 2022 Annual Report, a concerning trend of fall oxygen depletion in the deep basin of Big Glen Lake continues. You can count on the GLA to provide ongoing monitoring and provide updates to members accordingly.

Golden Shores: Heavy Pollen in 2023



Due to a combination of dry air, heavy pollen, and extended calm conditions, a thick accumulation of oak and pine pollen on the top of the water column gave the lake surface a highly unusual appearance last spring. Although biodegradable and non-harmful to water quality, the pollen appearance and persistence resulted in several reports to the GLA.

Snorkel Hikes: Monitoring Glen Lake's Aquatic Gardens

Aquatic gardens are an important health indicator of our lakes. Every summer the GLA monitors nearly 10 miles of underwater paths via snorkel to spot invasive plants. During the past ten years, observations have confirmed our aquatic gardens are healthy. No invasive plants have been detected.



Your Support Matters GLA Membership

Join the more than 450 individuals, families, and businesses who've already renewed their membership by signing up today for the 2024 season!

Effective in 2024, all annual memberships are now due for renewal by January 31st of each year. If you have not yet renewed, it's not too late! Not sure? Check your mailing label or contact us at contact@glenlakeassociation.org



Annual Memberships fund the majority of the GLA's annual operating budget. Your dues enable the GLA to conduct important water quality testing

and state-of-the-art research; prevent, manage, and eradicate invasive species; and educate the community about best practices.

To join or renew online visit: glenlakeassociation.org

Many payment options are available, including paying by check. If you choose to pay online, we encourage you to select the convenient auto-renewal option (nearly 300 of our members have already done so!) Thank you as always for your support of our shared mission.

Neighborhood Gatherings

Last July we launched a Neighborhood Gathering program, with an initial pilot targeting property owners along W. Day Forest Road on Little Glen. After mingling with their neighbors over coffee and muffins, attendees heard from our watershed scientist, Rob Karner, who provided an update on the watershed and answered questions.



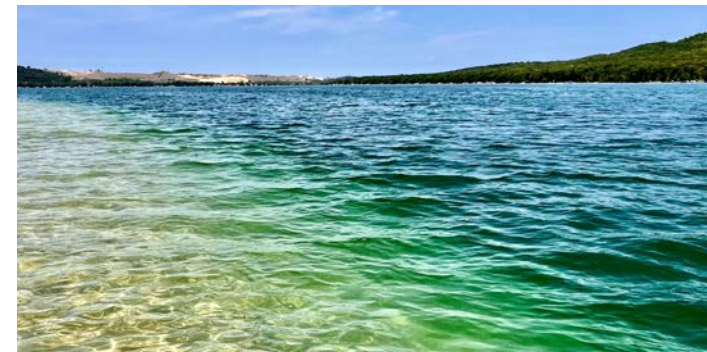
Membership Chair Woody McCally, Development Co-Chair Kris Fishman, and GLA Guardian Program Director Tricia Denton also shared brief updates on their committees' respective developments and objectives. Many attendees took advantage of the opportunity to schedule complimentary consultations, offered by the GLA to help riparians manage their properties consistent with best practices. The event also inspired new GLA memberships, and several new volunteers came forward to get involved with our work.

Following positive feedback from the gathering on Little Glen, a second event for residents of Tamarack Cove was held in conjunction with the annual meeting of their neighborhood association. This event



was also well-received. Given the successful debut of the program, we plan to roll it out to additional neighborhoods in 2024. Let us know if you would like to host a gathering in your area. Contact us at contact@glenlakeassociation.org

Your Legacy Matters GLA Development



The GLA Development Committee is most pleased to report that as of February 20, 2024, we have received **\$1,167,800** from **91** generous donors to the "Keeping it Blue" Boat Wash Endowment Capital Campaign. This critical and time sensitive fund-raising effort, now in its third and final year, will serve to permanently endow our boat wash operations, addressing one of the Association's most substantial and important annual expense items.

We cannot express enough our heartfelt gratitude for all those who have contributed to this effort thus far. And for those of you who have not yet jumped aboard, there is still time. You too can be a part of the largest fund-raising effort in the Association's 79-year history. Help us blow our total year-end campaign goal of \$1.3 million out of the water!

Legend and Legacy Members

The Legend program is your opportunity to preserve and protect the Glen Lake/Crystal River Watershed for generations to come. "Legends" are individuals who have chosen to provide for the long-term financial



support of the Glen Lake Association in their will or estate plan. When you become a Legend, you embrace the mantle of watershed stewardship into the future. This future support of watershed protection is perhaps the best assurance of the continued health of our lakes and rivers. Your generosity will help sustain the Glen Lake Association's state-of-the-art research and award-winning water protection programs in perpetuity.

Learn more at: glenlakeassociation.org/become-a-legend

GLA Legacy Members: \$100,000 or More in Lifetime Giving

Anonymous
Greg and Sue Besio
Brian and Mary Campbell
Richard F. and Carolyn A. Chormann Family Foundation
Diane Dean
Paul and Mary Finnegan
Joanne Knight Family
Andrew R. and Janet F. Miller Foundation
Denis and Martha Pierce
Dr and Mrs Richard Schilling
Sprouse Family Charitable Trust

GLA Patrons: \$50,000-\$99,999 in Lifetime Giving

Gosiger Foundation
John and Shirley Hoagland Family
Edward and Cameron Lanphier
Jerry and Marcy Tubergen Foundation
J R Zukin Corporation

Thanks and Acknowledgement

Many thanks to the GLA Board of Directors, staff, and Development Committee members Kris Fishman, Tom Dutmers, Stan Kryder, Sue Besio, Bill Witler, Chuck Ofenloch, Edward Lanphier, David Herr, Rob Karner, Tricia Denton, and Bob Boles. Their support and yours—of time, talent and treasure—allows the GLA to achieve its mission to preserve and protect our exceptional watershed for future generations. For information on how you can join in our fight to "Keep it Blue" contact co-chairs Kris Fishman and Tom Dutmers at development@glenlakeassociation.org

2023 Donors: Helping to “Keep it Blue!”

We are proud to recognize the more than 500 individuals, families, and organizations that contributed to our success in 2022. Without your annual membership and other contributions, we would not be able to fund essential water monitoring and education efforts. We also recognize our Honorary Members, Legend and Legacy Members, and “Keeping It Blue” Boat Wash Capital Campaign donors, who support our first line of defense against aquatic invasive species. Contact development@glenlakeassociation.org for more information on how you can be a part of this important campaign.

2023 Total Giving

\$10,000 & Above

- Anonymous
- Beith, Carsten and Leigh
- Campbell, Brian and Mary
- Cheney, David and Judy
- Cochran, George and Barbara
- Davis, David and Tracy
- Davis, Rodger and Debbie
- Finnegan, Paul and Mary
- Frank, Edmund and Eustacia
- Gosiger Foundation
- Hamilton, Jeff and Diane
- Klekamp, Peter and Laura
- Kryder, Joy and Stan
- Lanphier, Jon and Laura
- Lanphier, Edward and Cameron
- Leahy, Timothy and Margaret
- Martin, Van and Sharon
- McCally, Woody
- Miller, Janet and Andrew
- Pierce, Denis and Martha
- Tubergen, Jerry and Marcy

\$5,000-\$9,999

- Anonymous
- Boles, Bob and T.
- Dutmers, Jim and Susan
- Gottwald, John and Carol
- Hayes, David
- Joseph, Stephanie and Chris (Lanphier, Bob)

- Lanphier, Rob and Linda
- McDermott, Ed and Betsy
- O'Malley, Anne and Dick
- Skogsbergh, Jim and Diana
- Witler, Bill and Rita

\$1,000-\$4,999

- Balardo, John
- Barton, Sarah
- Bates, Chapin and Katie
- Beam, Renee and Jack
- Becker, Dennis and Carole
- Bellows, Ran and Jeff
- Berlacher, Bob and Julie
- Besio, Greg and Sue
- Bloom, Brian and Cheryl
- Bohmer, Dave and Lynn
- Boles, Janice
- Chormann, Richard
- Dean, Bill and Doreen
- Denton, Tricia and Shawn-Leelanau Getaway
- Doepke, Bill and Jane
- Duke, Melissa and David Tepoorten
- DuPont, Andy and Olivia
- Dutmers, Tom and Monica
- Dykstra, Jim and Ann
- Findlay, Eric
- Fishman, Ken and Kris
- Freeman, Judy and Jim
- Gardner, Brian and AudrieAna
- Gillula, Bill and Pat
- Gordon, Dan and Magee
- Hare, Ross and Jayne
- Herr, David and Maureen
- Huffsmith, Joseph
- Joutras, Rick and Meta

- Kilrea, Debbie and Jeff
- Knight, Lester and Becky
- Kraphol, Kay-Kraphol Fine Art
- Lichliter, Bruce
- McDonald, Michael
- McShane, Steve and Kathy
- Meserve, Bill and Susanne
- Miller, Larry and Melisa
- Myers, Matt-M22
- Ofenloch, Charles and Sara
- Ofenloch, John and Tiffany
- Oliver, Jim and Diane
- Paden, Kait and JJ
- Pentilla, Roy and Elaine
- Quarderer, George and Carol
- Quigley, William
- Riegel, Al and Kay
- Rockwood, Bill and Donna
- Rockwood, John and Ginny
- Rose, Marcia
- Selkoe, Kim
- Shook, James
- Shook, (James and) Ruthie
- Shugart, Duane and Chris-Dorsey's on Glen Lake
- St. Julian, Joe and Jennifer
- Sullivan, Stephen and Sara
- Theiss, Vik and Susan
- Voran, Laurel-Laurel Voran LLC
- Wakeling, Stephen
- Warburton, Harvey and Marilyn
- Ward, Curt and Kristy
- Weedman, Jeff and Cheri
- Westbay, Jacki (and Tom)
- Wiand, Dennis-Zero Gravity Aerial
- Wille, Tom and Sally
- Zukin, Chris

\$500-\$999

- Atherton Foundation
- Barker, Bill and Donna
- Barnell, Chuck and Kay
- Barry, Jr., Patrick and Cheryl
- Barton, Mr. & Mrs. James
- Bellows, Cynthia and Family
- Bloom, Robert and Felicia
- Bosin, Tal and Betsy
- Cassard, Dave and Cara
- Chesterfield, David and Linda
- Chormann, Jim
- Conzelman, Pat and Jim
- Creten, Ron and Peggy
- Cutler, Jeff and Tamara
- Doyle, Jim and Sharon
- Drucker, Bill
- Drumm, Charles and Catherine
- Dutmers, Chad and Macaier
- Egan, Tom and Rosemary
- Fink, Rick and Janice
- Floody, Kenneth
- Fornowski, Ronald and Charlotte
- Gigax, Larry
- Hanson, David L.
- Hoagland, John
- Housman, Fran
- Johnson, Gary and Christine
- Kelley, Dean
- Lovingood, Ruth
- Marquis, Jody
- McDermott, Anne
- Meyers, Ann
- Miller, David
- Miller, Pat and Deb
- Molten, Patricia
- Moore, Annabel

- Murray, Molly
- Nugent, George and Marilyn
- Oleson, Carl and Jackie
- Parker Harvey PLC
- Parks, Bob and Mary Anne
- Pearson, Jerry
- Przekop, Jerome and Laura
- Reid, Douglas
- Ryan, Jennifer
- Silvasi, Daniel and Linda
- Spitzner, Lance and Ania
- Wiegand, Bruce and Beth Stoner Wiegand
- Tamarack Cove Association
- The Little Garden Club
- Timmis, Theresa
- Ware, Donald
- White, David
- Williams, Thomas and Sarah
- Witler, Jason

\$250-\$499

- Agami, Lisa
- Allemang, Mike
- Alton, Bruce and Christie
- Andres, Jim and Connie
- Bagby, Sumner and Irene
- Barr, Tim and Kelley-Art's Tavern
- Batterson, Bill and Nancy
- Baxter, Bill and Gwen
- Becker, Ron and Jane
- Becker, James and Lynn
- Bierling, John and Lisa
- Betzig, Susan
- Binsfeld, Mindy and Mike
- Bolen, Bruce and Jane
- Brandt, Patty and Jeff
- Breitenbach, Jim and Barbie
- Calder, Mac and Kate

- Camp Haven
- Chick, Jeffrey and Lisa
- Cochran, Corinne
- Combs, Pat and Guy
- Craig, Rich and Robin
- Danielson, Sue
- DeKorne Cottage Trust
- DePuy, Pam and John
- Diggins, John and Karen
- Duke, William
- Dutmers, Timothy and Jen
- Evans, Bob and Sandy
- Fehrmann, Bob and Barb
- Finnegan, Alex
- Finnegan, Katherine
- Finnegan, Paul
- Fitzgerald, Melanie
- Freeman, Bill and Janice
- Geisler, David and Sharon
- Gietzen, Jeff and Georgia-Northwoods Hardware
- Glass, Geoffrey and Linda
- Gleffe, Robert and Nancy
- Gordon, David and Penelope
- Goris, Greg and Cindy
- Gravelie, Scott and Ellen
- Gross, Raymond and Lynn
- Grover, Jeff and Lori
- Harimoto, Deane and Daw
- Hawley, Joan
- Heikkila, Kirsi
- Hill, David and Susan
- Hoagland, Nancy
- Hohle, Dave
- Hughes, Kay
- Hutchison, Douglas
- Jacobs, Bruce and Judi
- Janata, Jeffrey and Susan Carver
- Jeris, David and Laurel
- Johnson, Richard and Suzanne
- Johnson, Brad and Kristen
- Kamps, Dick and Lynn
- Karner, Robert and Barbara
- Kasmersky, John and Heather
- Kasper, Alan and Teri
- Kay, Dick
- Kovacs, Marisa
- Krawczak, Larry and Anne
- Kremin, Jeffrey and Rebecca
- Laitala, Jack and Hope
- Litch, Mike
- Lysaght, Pamela and Leon
- Magoun, Anne
- Manders, Mark and Karen
- McArthur, Brad and Leah
- McElrath, Randy and Margaret
- Meyer, Rob and Judy
- Miller, Keith and Elaine
- Miller, Joe and Angela
- Miller, Don and Sandy

- Miner, John and Melanie
- Montgomery-Kanitz, Heather
- Morawski, Jerry (and Debbie)
- Morley, Jay and Mary
- Moroz, Dennis
- Foltz, Jim and Sallyanne Morris
- Novak, Bob and Mary Jane
- Ohlfs, Chuck and Judy
- Pattee, Kathryn
- Peirce, Vic and Bette
- Pejsa, David and Judi
- Petersen, Thomas and Jean
- Petro, George and Leslie
- Pinkerton, Lizza and Brian
- Polman, Kim
- Pope, Kip
- Potter, Randy and Sheila
- Ransick, Barry and Mimi
- Rawsthorne, Patrick
- Rockwood, Daniel and Jennifer
- Rycus, Judy and Jeffrey
- Selkoe, Dennis
- Smith, Pat
- Smith, Dean and Millie
- Spaeth, Jeff and Jenny
- Sprouse, Joanne Family Trust
- Stead, Robert and Petra
- Stenback, Kirk
- Strong, Bucky and Michelle
- Strong, John
- Tefft, Forrest and Ann
- Timmis-Chisholm, Mary Cecile
- Trulaskie, Sarah
- Udell, Tim
- Unger, Timothy and Susan
- Valenti, Joseph and Karen
- Van Nort, Peter and Karen
- Van Zoeren, Tom and Alice
- Vermeir, Raphael and Federica
- Waldeck, Cynthia
- Walsh, Maleita and Matt
- Walton, John
- White, Tom
- Wood, Chris and Sally
- Yanover, Jennifer

Up to \$249

- Adler, Barry and Lynn
- Ahrns, Ron and Mien
- Aldea, Marleen and Molly Baran
- Anonymous
- Antle, Joan
- Augenstein, David
- Baad, Jack
- Backus, Joe and Barbara
- Bahr, David
- Balk, Martin and Melissa
- Barber, Meg

- Barczyk, Brock & Priscilla
- Beier, Jane
- Beier-Scott, Linda
- Bell, Jim and Mary Labbe-Bell
- Binsfeld, Greg-BFLP
- Blood, Carolyn
- Borio, Ed and Marlen
- Borland, Cecelia
- Braly, Barbara
- Brammer, Lawrence and Beverly
- Brummett, Willie
- Budinger, Gay (and Dick)
- Burke, William and Caryl
- Burrows, Brendan and Elizabeth Derrick
- Calligaro, Paul and Julia
- Carleton, Dave and Leslie
- Cary, Rosemary
- Chen, Kelvin and Carol
- Church, Sue
- Cioci, Margie and Joe
- Clark, Stephanie
- Clark, Mark and Carol
- Coffer, Joe and Barbara
- Colbath, Dick
- Collins, Stephanie
- Cornillie, Joe and Anne
- Correll, Rich
- Crabtree, Janice
- Daniel, Marti
- Daniel, Cindy
- Dean, Jeanine
- DeRosa, MaryAnn
- DeVirgilio, Mark and Susan
- Doran, Maureen
- Dutmers, Molly
- Eimers, Valerie
- Emery, Margaret
- Emming, Michael
- Engelhardt, Bobbi
- Enwright, Steve
- Fenton, Christian
- Fenton, Grace
- Fettig, Jason
- Fishman, Jennifer
- Fishman, Carolyn
- Fishman, Matthew
- Ford, Fred and Karen
- Friex, Eberhardt and Mary
- Gettle, Marissa
- Gideon, John and Lynn
- Good, James and Antoinette
- Gould, Andy
- Grabber, Gloria
- Greenberg, Les
- Greene, Caleb-Glen Lake Surf Co.
- Grego, George and Mary
- Haas, Caitlynn
- Haig, William
- Haig, Kim
- Haire, Lynn
- Haley, Susan
- Haughn, David and Susan

- Hawn, John and Margaret
- Heggen, Sylvia
- Heintskill, Melinda
- Heston, Jan and Bill
- Hickey, James and Bunny
- Hill, Douglas and Helen
- Holland, Meegan
- Huesmann, Rowell and Penny
- Hunstad, David and Karen
- Jackson, Lary and Sarah
- Johnson, Pat and Nancy
- Johnson, Elizabeth and Nick
- Kemler, James and Paula
- Killpack, Dave
- Kraus, Steve and Diane
- Krueger, Eric and Virginia
- Lalomia, Melissa
- Langhorst, Marty and Marsh
- Lassen, Susan
- Lech, Ronald
- Lentz, Cindy
- Listecki, Robert and Lyn
- Lund, John and Barb
- Marth, Robert and Janet
- Martin, John and Wendy
- McAllister, William
- McGreal, Joseph
- McLaughlin, Lana
- McTigue, Patricia
- Mellas, Jim
- Menacher, Tom
- Morris, Julie and Jacquelyn Kendall
- Mortimore, Pete and Bonnie
- Mouty, Richard
- Moyerbrailean, Todd
- Mueller, J
- Mulvenon, Mary
- O'Connell, Tim and Carol
- O'Neill, Pat
- Paczas, Diane
- Park, John
- Paul, Kristen
- Paupore, Jennifer
- Peake, Wendi and Jeff
- Peirce, William
- Pelak, Diane
- Pelham, Matt and Kathy
- Picard, Peter
- Plagens, Doug and Charlene
- Poirier, Will and Cait
- Polzin, Charlie and Robyn
- Pronger, Derk and Shannon
- Ptak, Sue and John
- Puzzuoli, Joseph

- Rentenbach, John and Peachy
- Rice, James and Lois
- Riga, Scott
- Romeyn-Wanderers Rest Condo
- Rosiek, Ken and Cindy
- Rutledge, Weldon and Pippi
- Sagante, Dorothy and Rich
- Schilling, (Barbara and Dick)
- Schilling, Gerry and Carolyn
- Shannon, Cynthia
- Short, Deb and Tim
- Siepkier, Frank and Tracy
- Simms, Larry and DeLourdes
- Smith, Dana K.
- Smith, Ernie and Kay
- Smith, Wendin
- Smith, Larry and Roo
- Soller, Stephanie
- Spaly, Robert and Carol
- Spring, John and Sita
- Sprouse, Bradford and Jandy
- Stewart, Edward and Paula
- Stoller, John and Marjorie
- Strauss, Tom and Kiki
- Suhajda, Janice
- Tankard, Tim and Val
- Tatum, Don and Stephanie
- Taylor, Renee and Bill
- Tefft, Brandt and Susan
- Teske, Melissa
- Thoburn, Jim and Mary Beth
- Thomas Hart Family
- Thomasma, Tom and Michele
- Trapp, Sallyjo
- Ulrich, John
- Van Zoeren, Doug
- Velting, Victoria
- Wagner, Bruce
- Ware, John
- Weadock, Mary K
- Weick, Mark and Lee
- Wepking, Chuck and Dorothy
- Whiteside, Charlie
- Wickland, John and Skye
- Wilcox, Kay
- William Beaumont Hospital Medical Staff
- Wolbrink, Paul and Vivian
- Worth, Dan and Meg
- Worthington, Richard and Cynthia
- Wright, Holly-Habitat Story
- Zarkowski, Pamela
- Zukin, Michael

We strive to acknowledge all our supporters accurately and apologize for any errors or omissions. Please contact us at contact@glenlakeassociation.org to update our records.

- Honorary Member
- Keeping It Blue Campaign Donor
- Legend and Legacy Members
- Deceased

Your Stewardship Matters GLA Guardianship



“Our dad, Judge William Hampton, the reason we’re all here and why we get to enjoy Glen Lake, passed away August 24, 2022, a few weeks before the shoreline project was complete, but I know he would have been really pleased with it.”

We invite eligible parties to apply for the 2024 Stewardship Awards. Eligible parties may include homeowners, business owners, contractors, and local units of government. We consider those who have developed or redeveloped lakeshore or stream bank properties in full compliance with shoreline zoning ordinances (using ecologically sensitive and sustainable principles), as well as those who have maintained their property utilizing best management practices. The hope is that through these awards, ecologically responsible development along lakeshore and riverbank will become the norm, not the exception.

Examples of award categories include:

- **Water Friendly Protection Strategy:** For a governmental unit that creates an ordinance or code that helps preserve the environmental integrity of our lake and river systems.
- **Lake-Friendly Home Construction:** For a homeowner or contractor who builds a new home or reconstructs an existing building while preserving environmental integrity.
- **Lakescaping or Riverscaping:** For a homeowner or contractor who uses native vegetation and mostly natural materials to landscape waterfront property that complies with zoning rules and goes even further to protect the shoreline and improve water quality.

Do you know someone who deserves a nomination for the GLA 2024 Stewardship Awards? Maybe it’s you! Send your consultation inquiries and nominations to contact@glenlakeassociation.org

Stewardship Award Winners

While we are all guardians of the watershed, the GLA annually recognizes those who go above and beyond and serve as examples for us all. Our 2023 Stewardship Award Winner was the William Hampton Family. Bill’s daughter Sarah accepted the award on behalf of the family.

“When we really started noticing the erosion, we weren’t sure what to do,” said Sarah. “Like many homeowners on the lake, we put in a break wall. In one winter, it was decimated so we had the rocks re-stacked. Again, it fell but now the ice flows started pushing up our lawn into a massive berm. Unfortunately, without some sort of solution, we would lose mature cedar trees that once sat 30-50 ft from the water and now had exposed roots.”

“With the help of the GLA we learned about how a natural-bioengineered shoreline could help us. We got a free onsite consultation and were given recommendations for certified professionals who could design and install a solution.”

“I was extremely nervous when I drove out from Traverse City in early April but elated to find that the coir logs and re-design had worked! We made it through the winter unscathed. By June we were blessed with beautiful native plants that had sprouted up, and the return of a sandy lake bottom like the one my dad found in 1970 when he bought our slice of paradise.”

2023 Guardian Program



Congratulations 2023 Honorary Member, Bill Meserve!

By a unanimously supported motion of the GLA Board of Directors, Bill Meserve was recognized as a 2023 Honorary Member for demonstrating outstanding commitment to the protection,



preservation, and improvement of the Glen Lake/Crystal River Watershed through past service to the Association. When it comes to being of service, you name it, Bill has done it. Something needs doing, Bill does it. He exemplifies the spirit of service in all that he does

and not just for the watershed, but for the whole Glen Lake community. Thank you, Bill, for all you do!

Supporting Future Water Protectors – GLA Internships

2023 GLA Intern Josh Samberg had this to say about his time with the GLA: My name is Josh Samberg, and I am a sophomore majoring in Wildlife and Fisheries Biology at The University of Vermont. This past summer, I had the pleasure of being a GLA intern and working at the boat wash. I’ve spent every summer of my life staying at a family cottage in Leelanau, so I feel very connected to this place and its unique ecosystems. The work I was able to do with the GLA was educational and meaningful. My internship has given me valuable skills and perspectives that will follow me through life. Thanks again for a great experience! **It’s All About the Water!**

Thanks to the generous support of the Dutmers and Witler families, the GLA is able to provide this outstanding experience annually.

Your GLA Staff, Board, and Committee Chairs

STAFF

EDUCATION & OUTREACH	Tricia Denton	OFFICE ADMIN	Sallyanne Morris
WATERSHED SCIENTIST	Rob Karner	ASSISTANT BIOLOGIST	Joe Blondia
BOAT WASH	Victoria Velting	DISCOVERY BOAT & ASSISTANT	Laura Wiesen

GLA BOARD MEMBERS

PRESIDENT	Stan Kryder
VICE PRESIDENT	Dave Cheney
SECRETARY	Kris Fishman
TREASURER	Jennifer St. Julian
PAST PRESIDENT	Edward Lanphier
MEMBER	Pat Combs
MEMBER	Tom Dutmers
MEMBER	Rick Fink
MEMBER	Pete Haley
MEMBER	Woody McCally
MEMBER	Dick O’Malley

COMMITTEE

COMMUNICATIONS	Dick O’Malley
COMMUNITY RELATIONS	Tom Dutmers
DEVELOPMENT	Kris Fishman
EDUCATION & OUTREACH	Tricia Denton
EWM TASK FORCE	Pete Haley
FINANCE & INVESTMENT	Dave Cheney
MEMBERSHIP & RECORDS	Woody McCally
NOMINATING	David Hayes
TECHNOLOGY & WATER LEVEL	Rick Fink
WATER QUALITY	Edward Lanphier

CHAIR

Dick O’Malley
Tom Dutmers
Kris Fishman
Tricia Denton
Pete Haley
Dave Cheney
Woody McCally
David Hayes
Rick Fink
Edward Lanphier

CO-CHAIR

Jennifer St. Julian
Pat Combs
Tom Dutmers
Pat Combs
Dave Cheney
Jennifer St. Julian
Dick O’Malley
Stan Kryder
Bill Meserve
Pete Haley



P.O. Box 551 | Glen Arbor, MI 49636



Save the Date!

**2024 Annual
Member Meeting**

Saturday July 27 at 9 AM
Glen Lake School Auditoria

What will you do
to Keep it Blue?



**KEEP IT
BLUE**

GLEN LAKE ASSOCIATION



DONATE